

Triangles

Triangle: ① 3 sided polygon.

② Closed geometric figure - you end up where you started if you trace it.

③ Sum of its 3 angles = 180°

Triangles can be classified by:

① Angles

Acute

All angles
are acute

Right
Right angle
in it

Obtuse
1 obtuse angle
in it

② Sides

Scalene

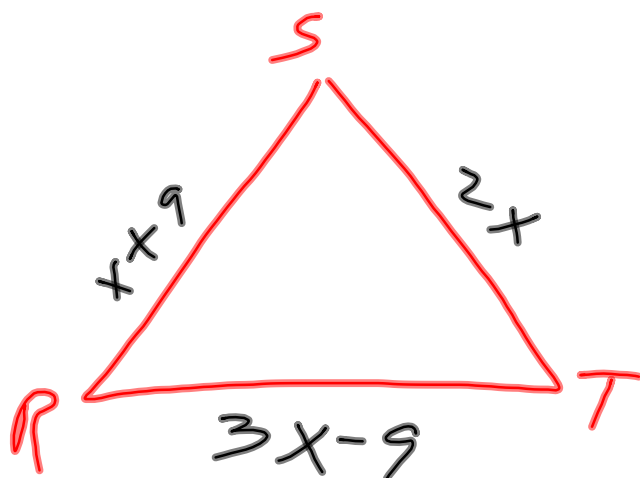
no sides are
equal

Isosceles

2 sides
are equal

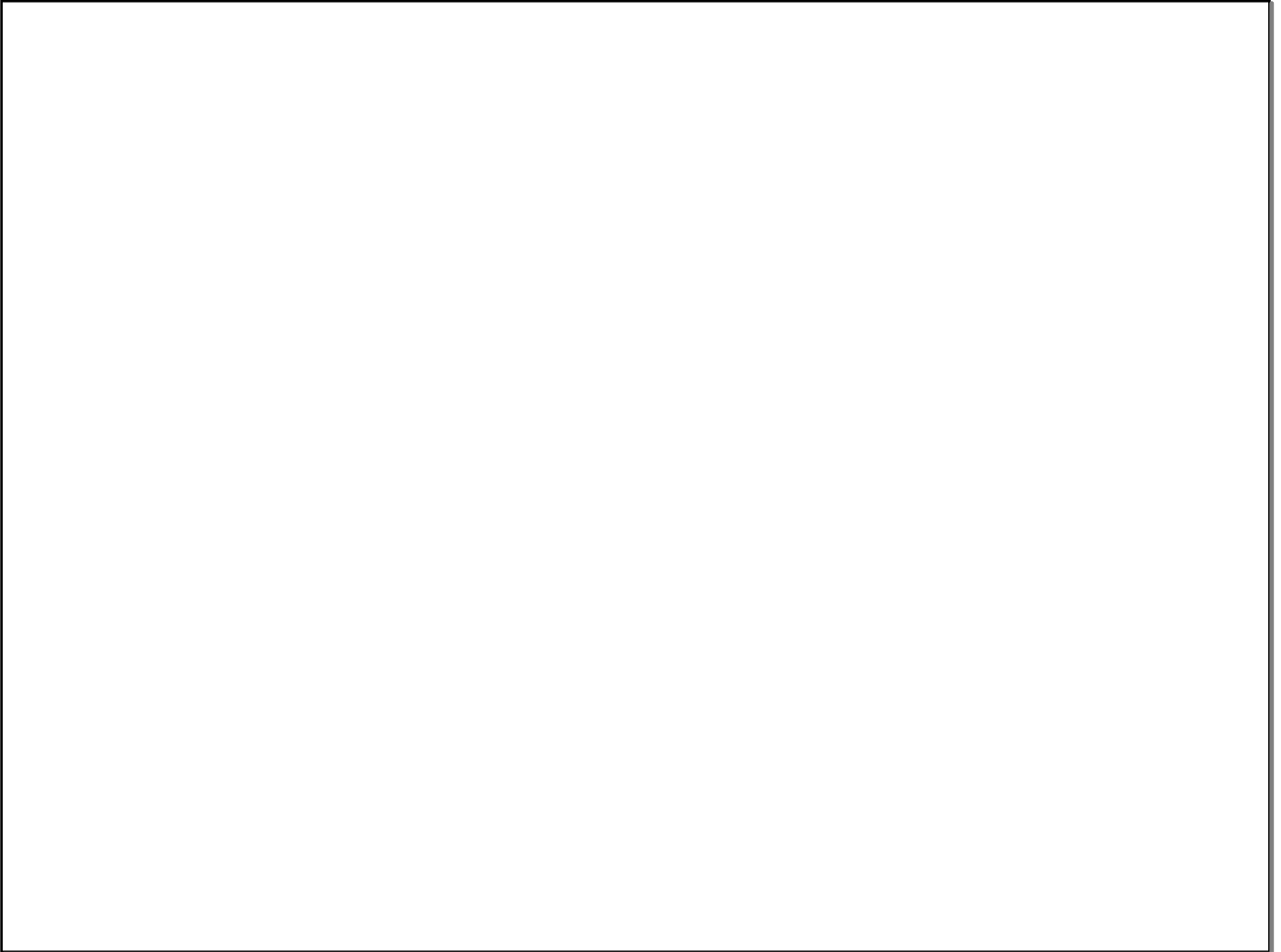
Equilateral

All sides
are equal.



$\triangle RST$ is
equilateral

Find the measure of
each side.



Find the measure of each side of $\triangle DEC$. Classify $\triangle DEC$.

$$D(3, 9) \quad E(-5, 3) \quad C(2, 2)$$

Use distance formula

